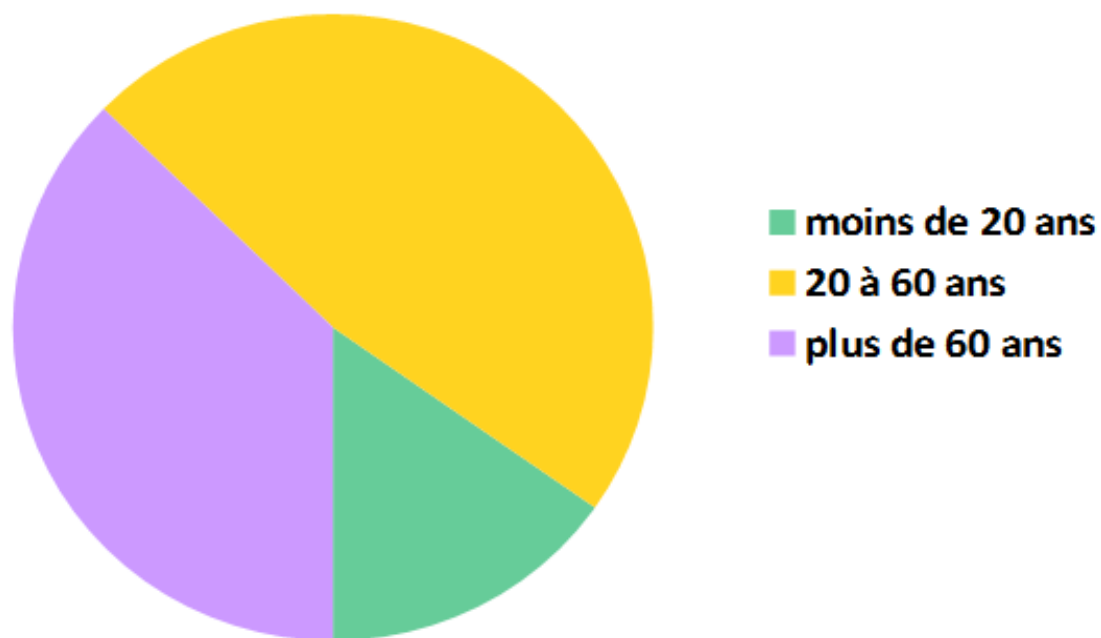




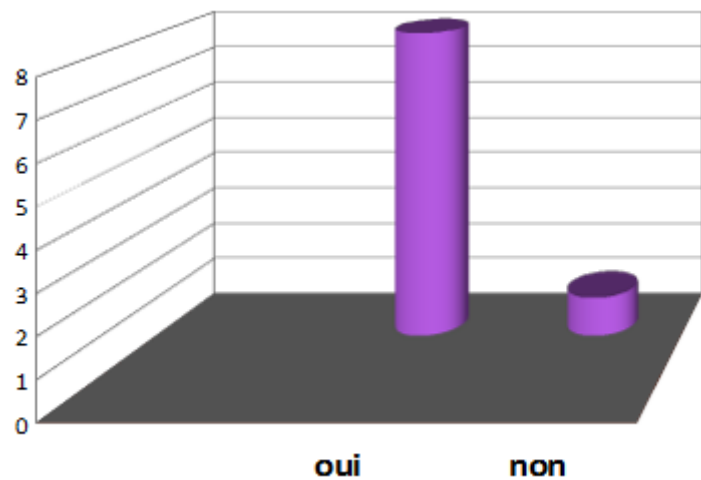
Résultats, par tranches d'âge, de l'enquête menée sur le cadre de vie à Avranches au printemps 2016

Tranches d'âge

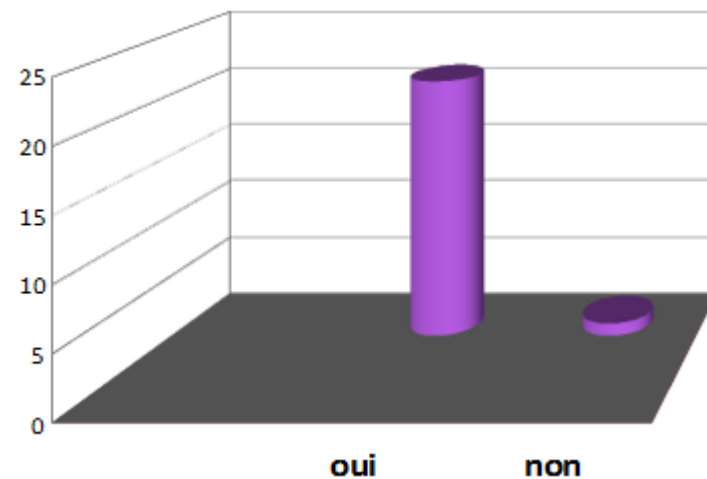


Aimez-vous vivre là où vous résidez ?

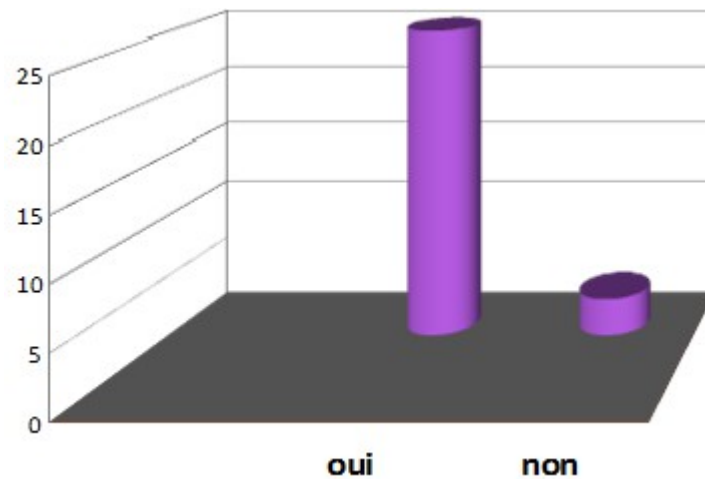
- de 20 ans



+ de 60 ans

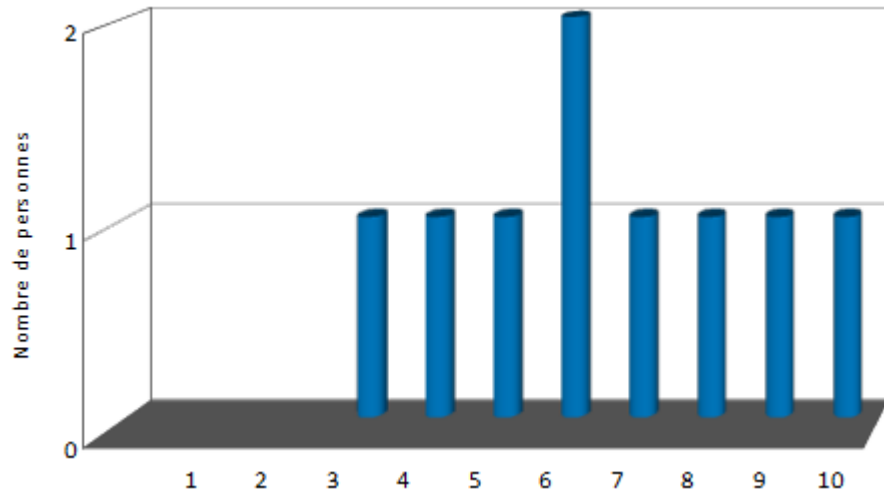


de 20 à 60 ans

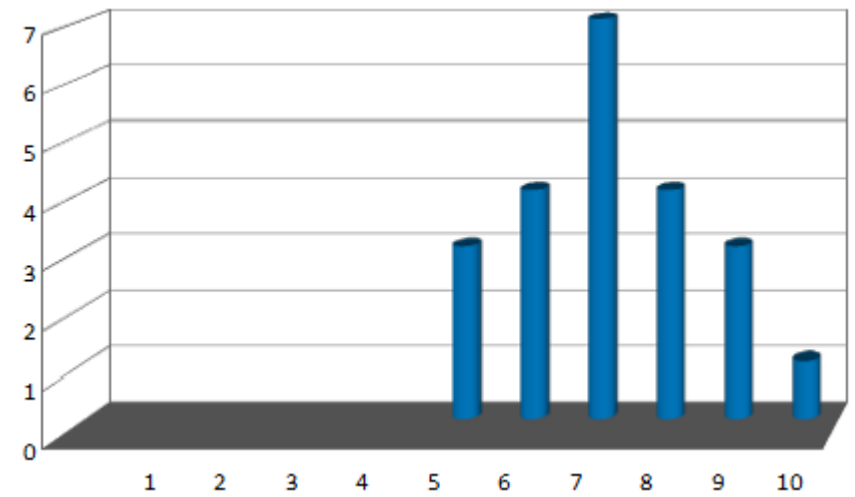


Notes pour le quartier

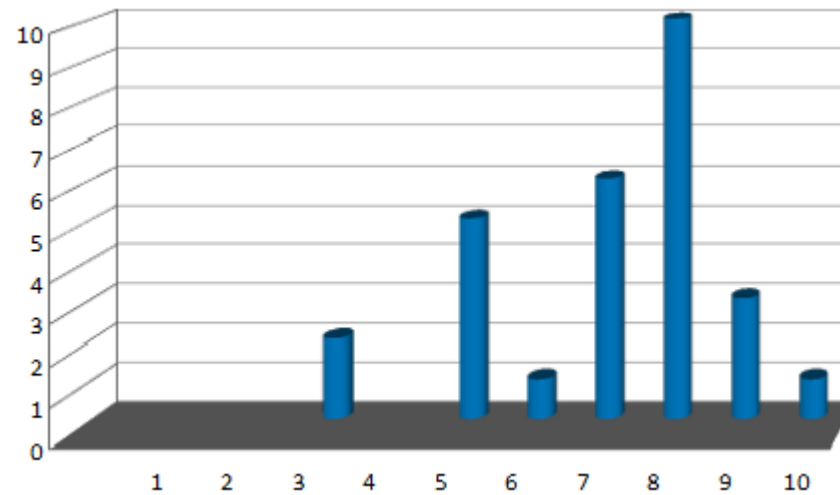
- de 20 ans moy = 6,45



+ de 60 ans moy = 7,1

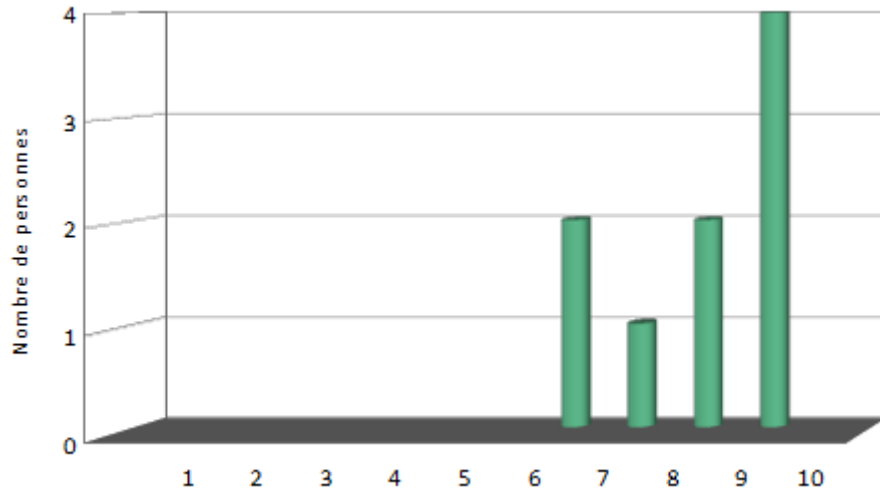


de 20 à 60 ans moy = 7

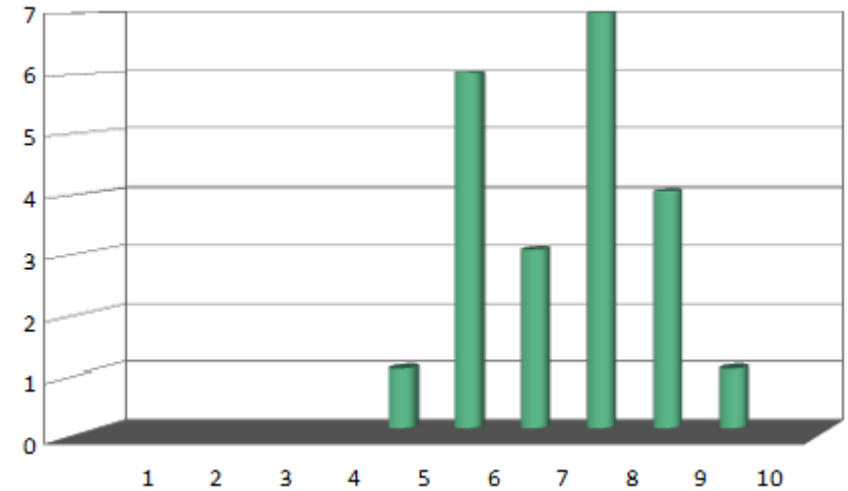


Notes pour la Commune

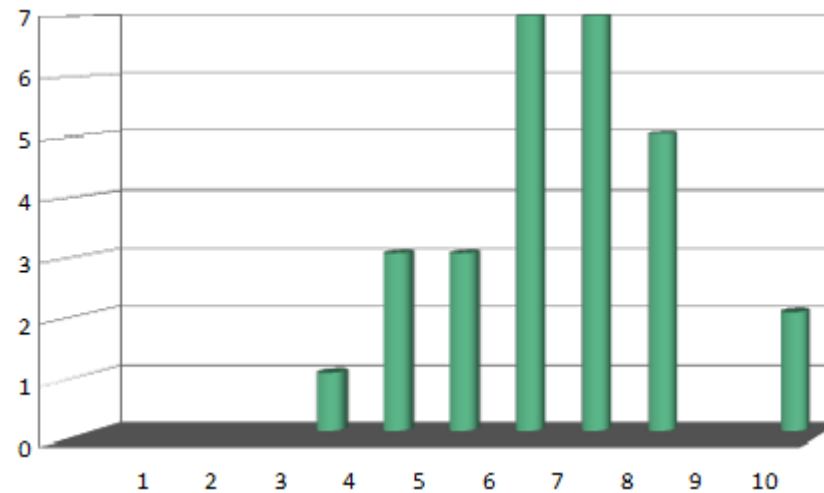
- de 20 ans moy = 7,9



+ de 60 ans moy = 6,45

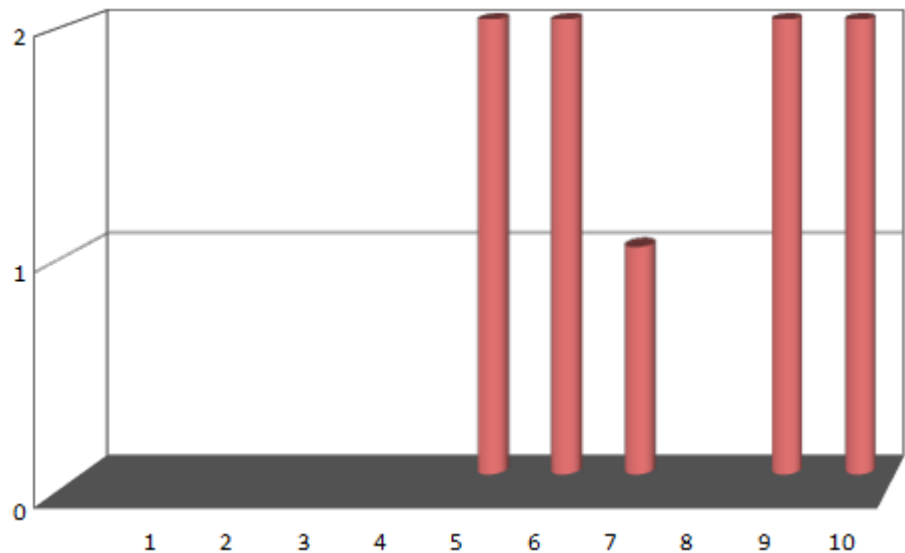


de 20 à 60 ans moy = 6,45

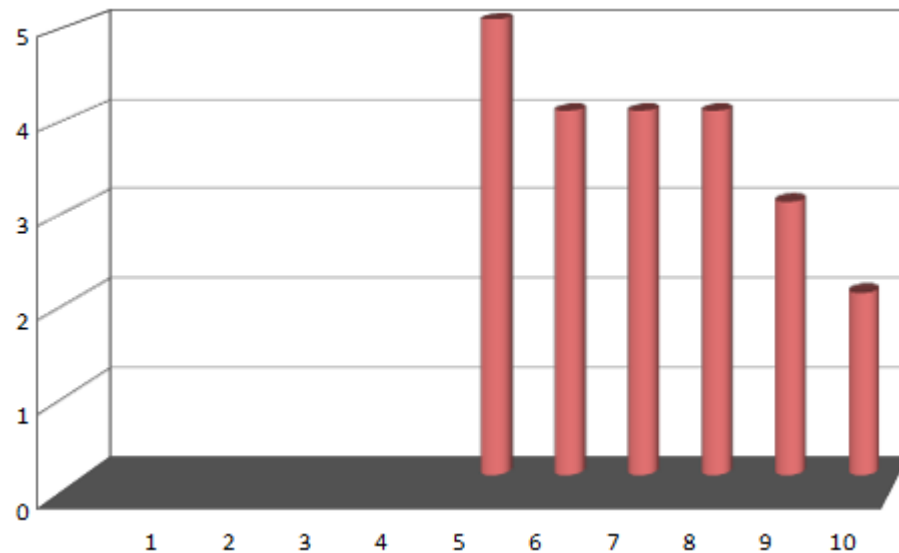


Notes pour le Sud Manche

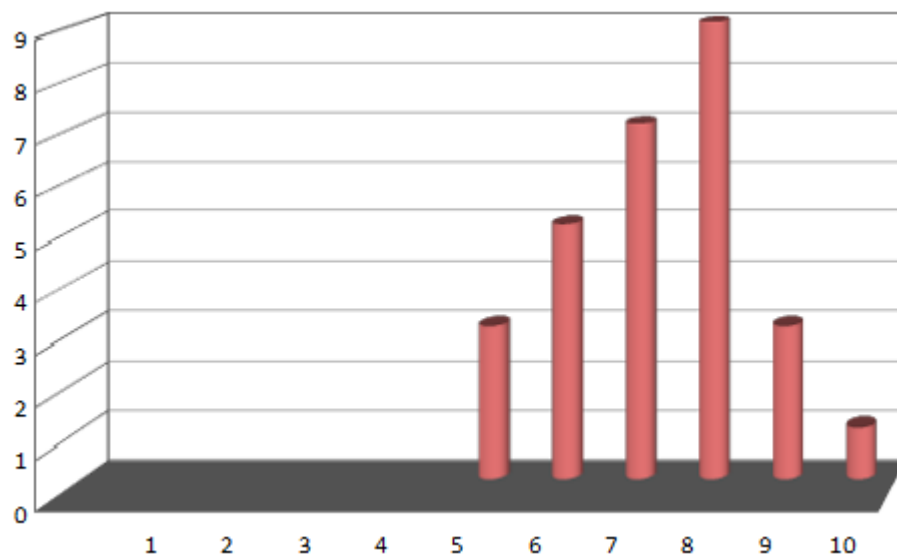
- de 20 ans moy = 7,45



+ de 60 ans moy = 7,1

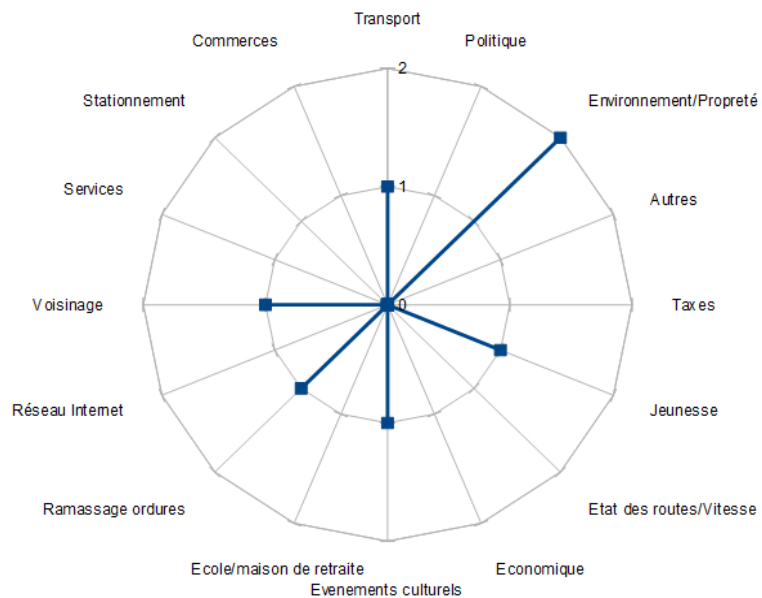


de 20 à 60 ans moy = 7,25

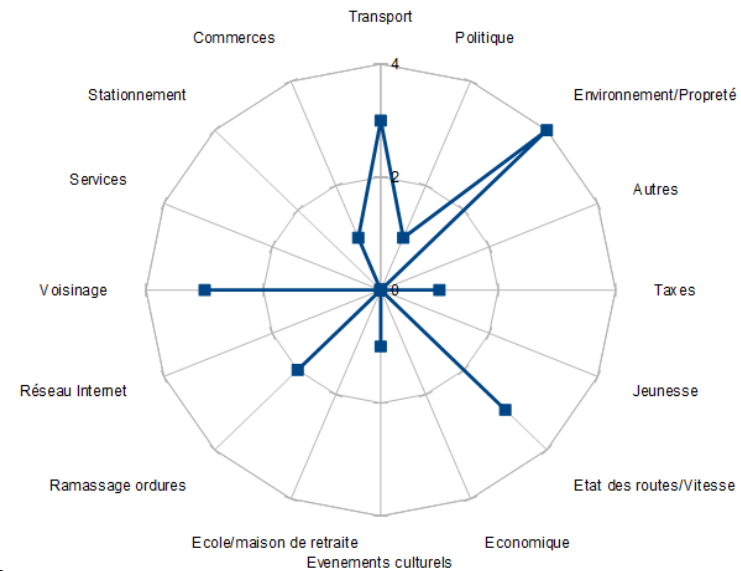


Les points à améliorer

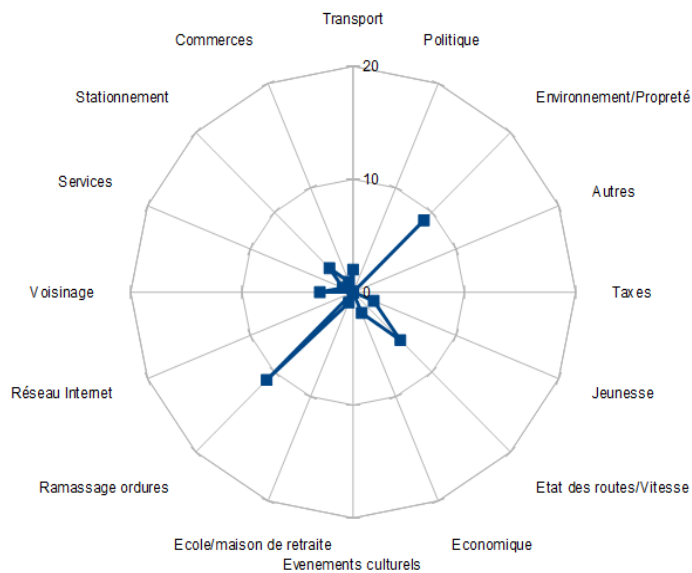
- de 20 ans



+ de 60 ans

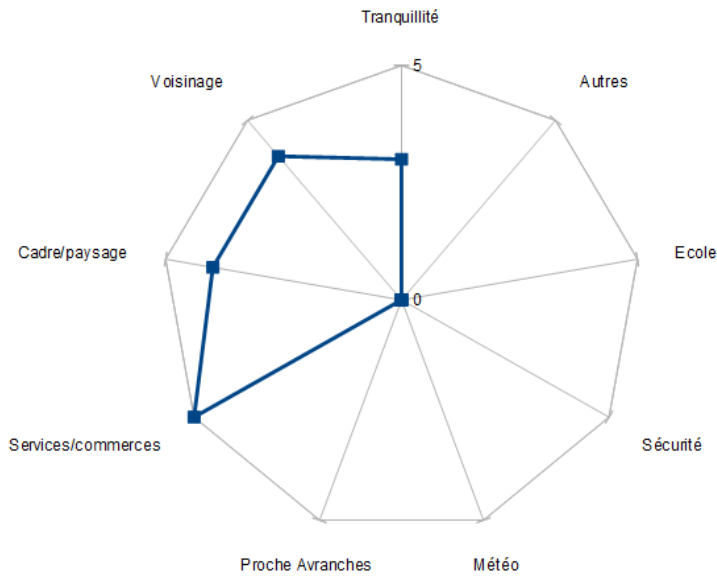


de 20 à 60 ans

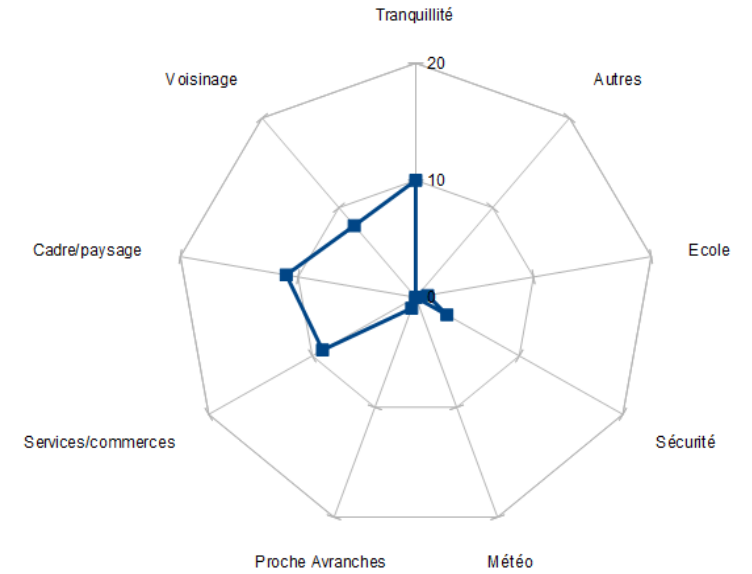


Points Positifs

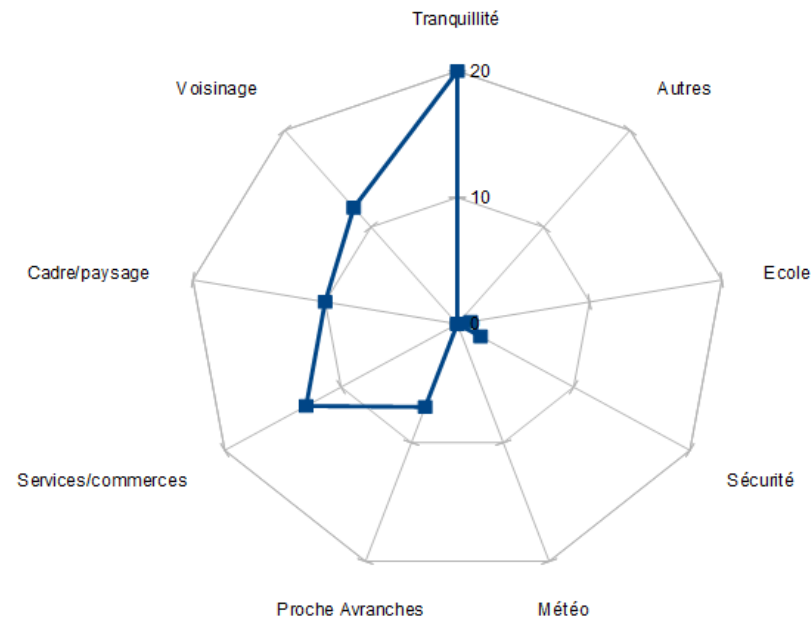
- de 20 ans



+ de 60 ans

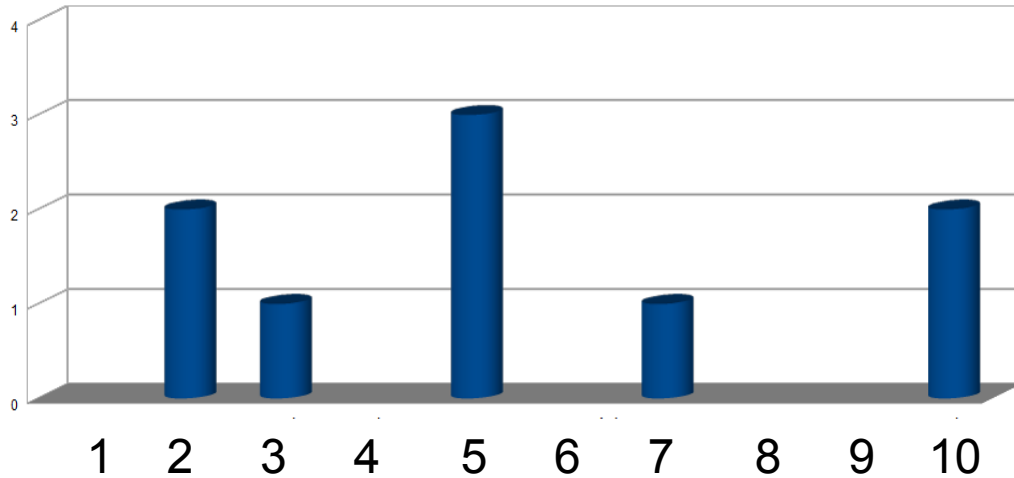


de 20 à 60 ans

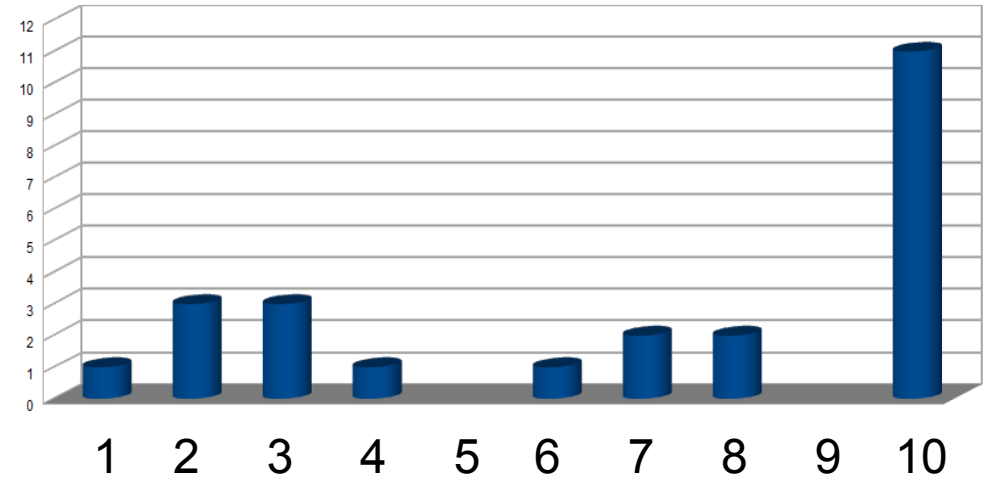


Actions que les personnes enquêtées souhaitent voir mises en place pour améliorer leur cadre de vie

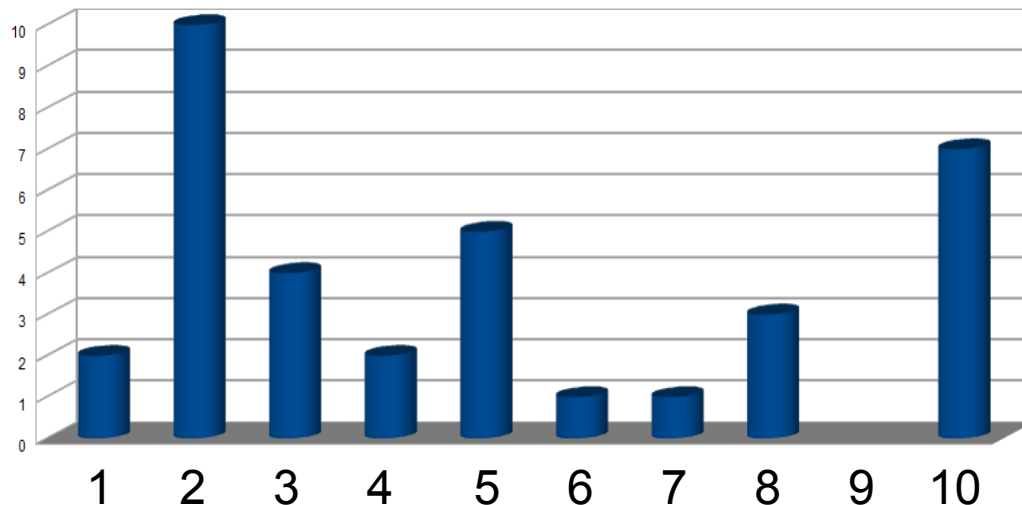
- de 20 ans



+ de 60 ans



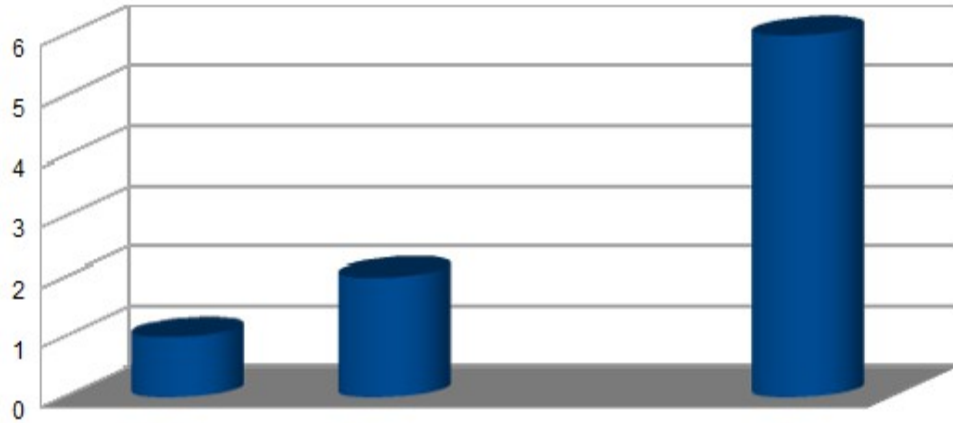
de 20 à 60 ans



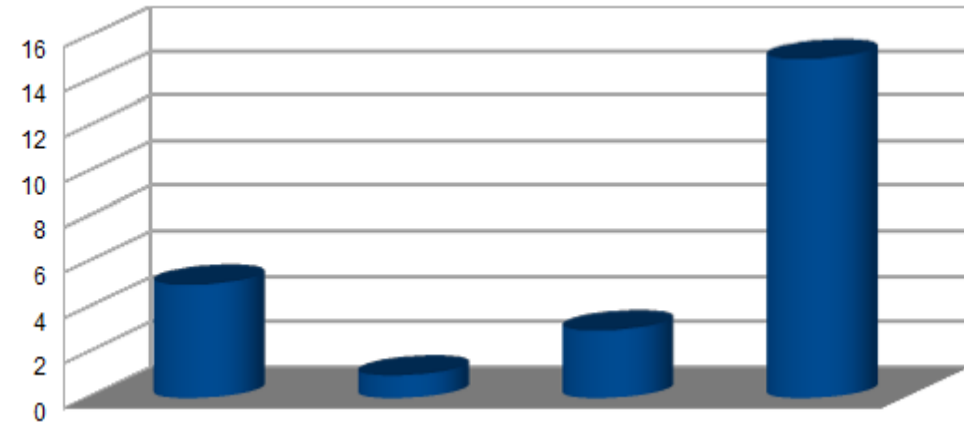
1. Commerces
2. Equipement/Entretien
3. Communication/Action des élus
4. Développement économique
5. Action jeunesse
6. Transport personnes âgées
7. Animations
8. Transport/Covoiturage
9. Crèche
10. Pas d'idée

Actions Personnelles

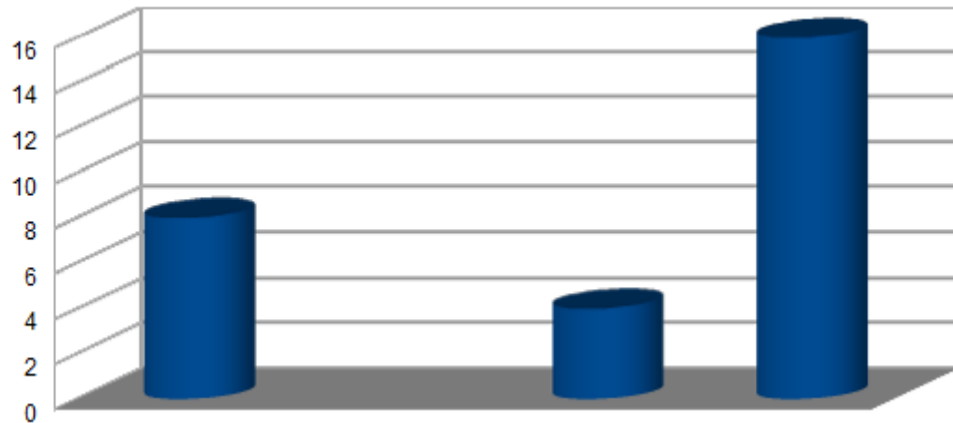
- de 20 ans



+ de 60 ans



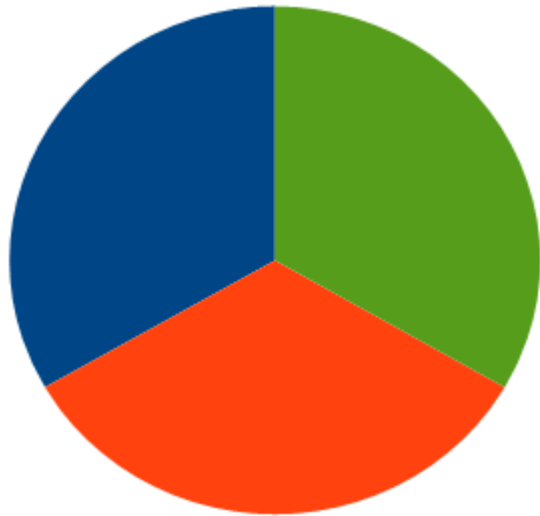
de 20 à 60 ans



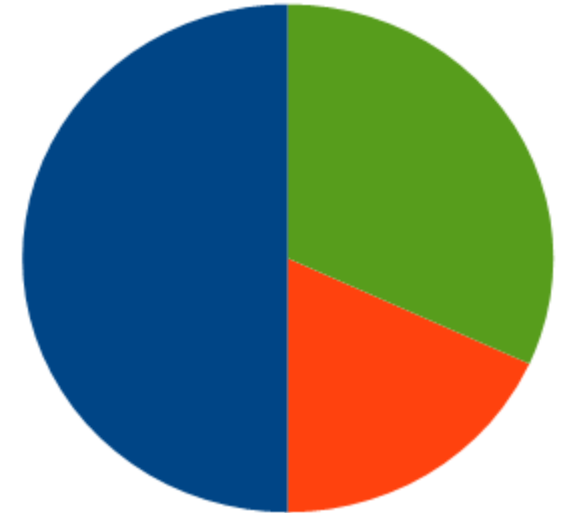
1. Entraide
2. Participation aux événements locaux
3. Implication
4. Rien

Thème le plus important

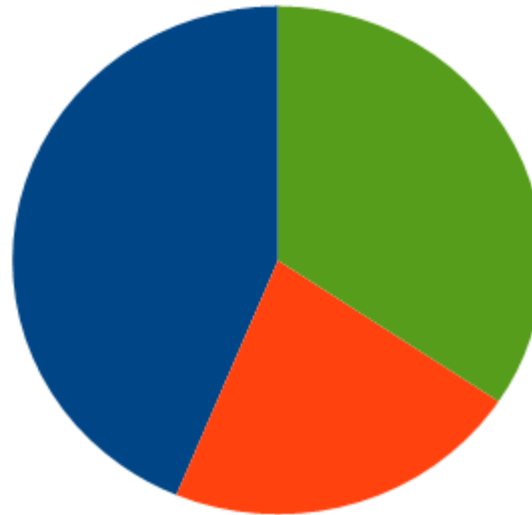
- de 20 ans



+ de 60 ans



de 20 à 60 ans



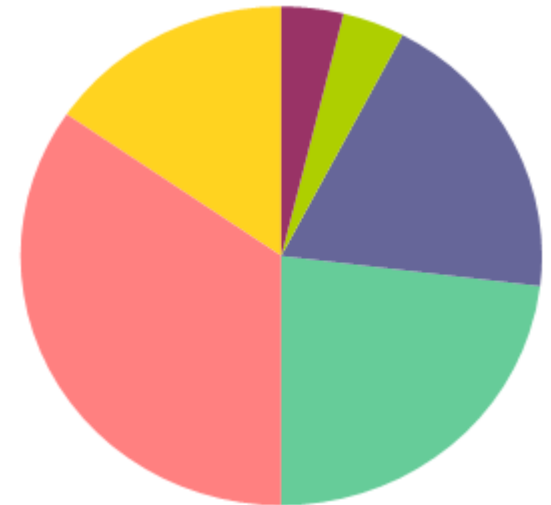
Autres thèmes

- de 20 ans

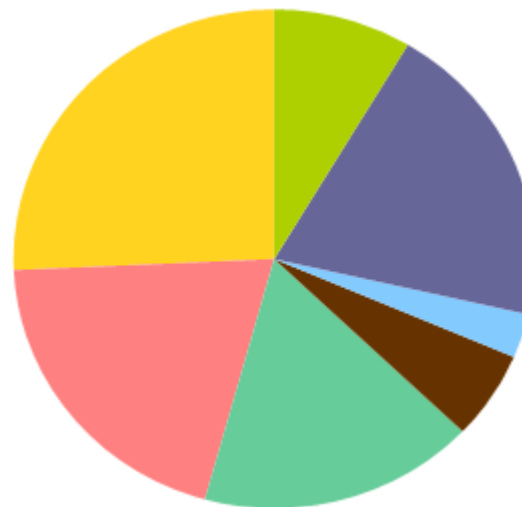


- Culture
- Santé
- Habitats
- Travail/Economie
- Service de proximité
- Loisirs éducation
- Transports/Déplacement Mobilité
- Tourisme
- Egalité d'accès

+ de 60 ans

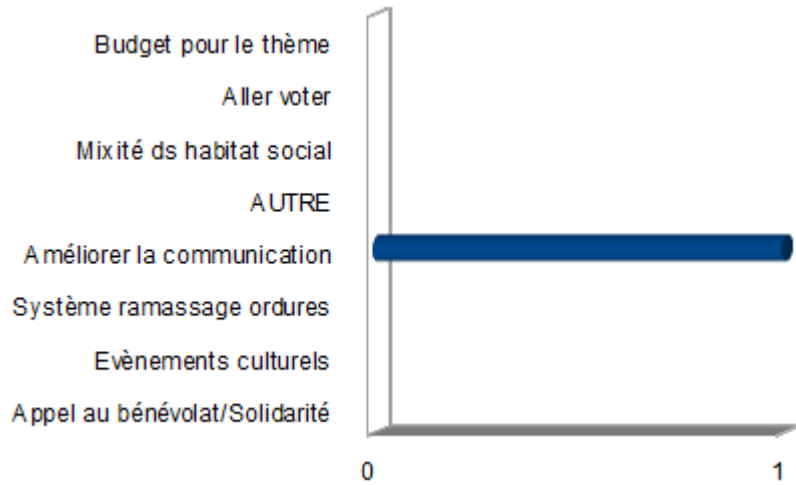


de 20 à 60 ans

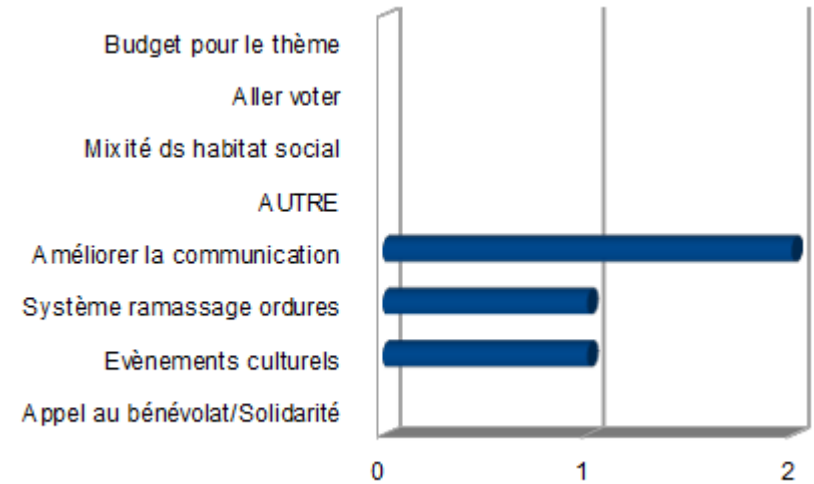


Améliorer le thème

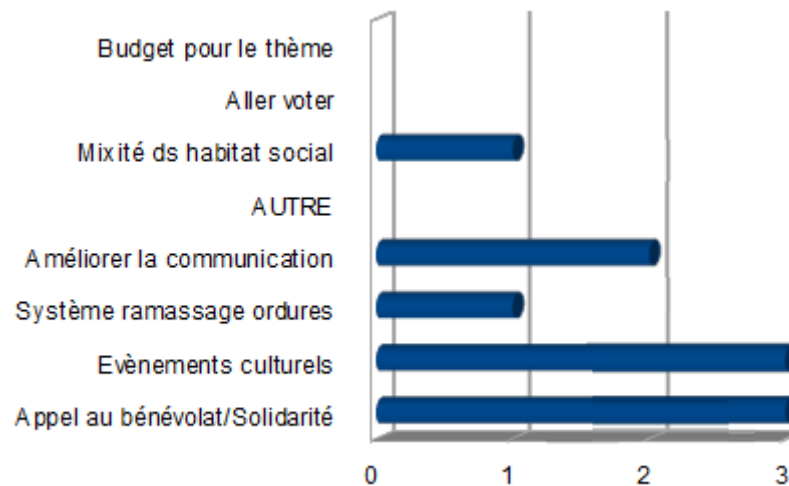
- de 20 ans



+ de 60 ans



de 20 à 60 ans

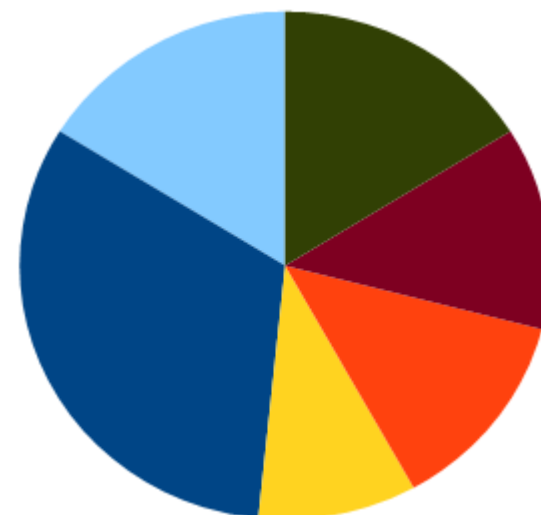


Associations connues

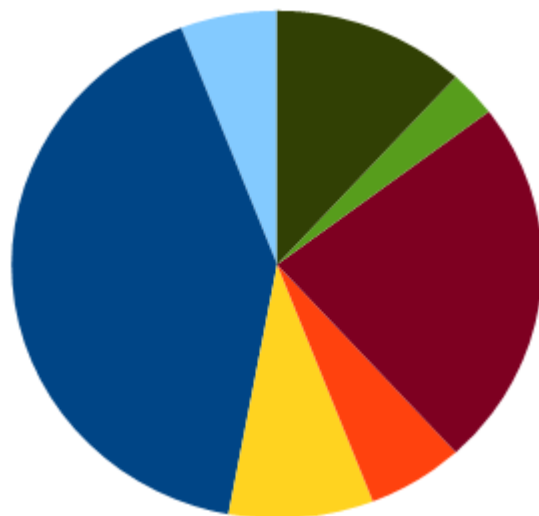
- de 20 ans



+ de 60 ans

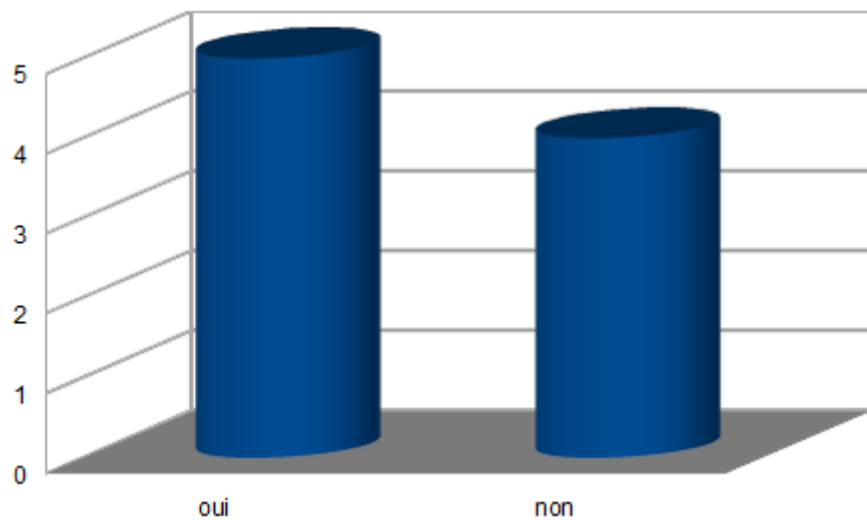


de 20 à 60 ans

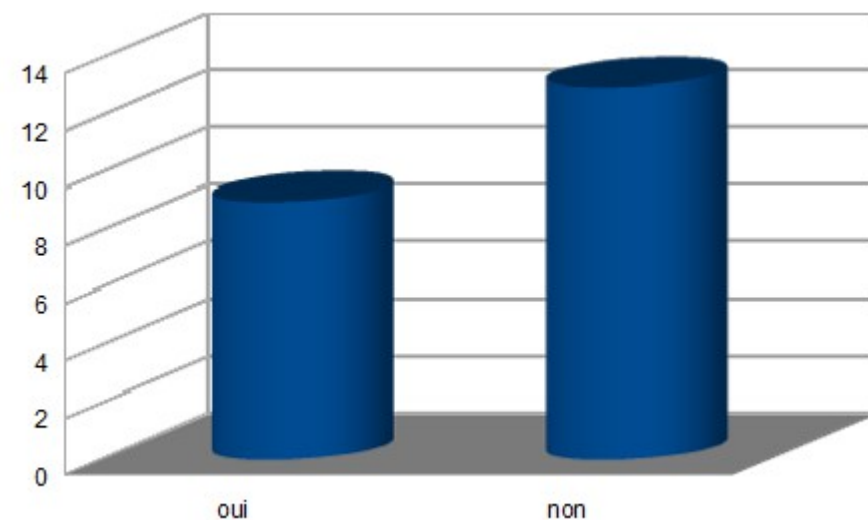


Participation aux associations

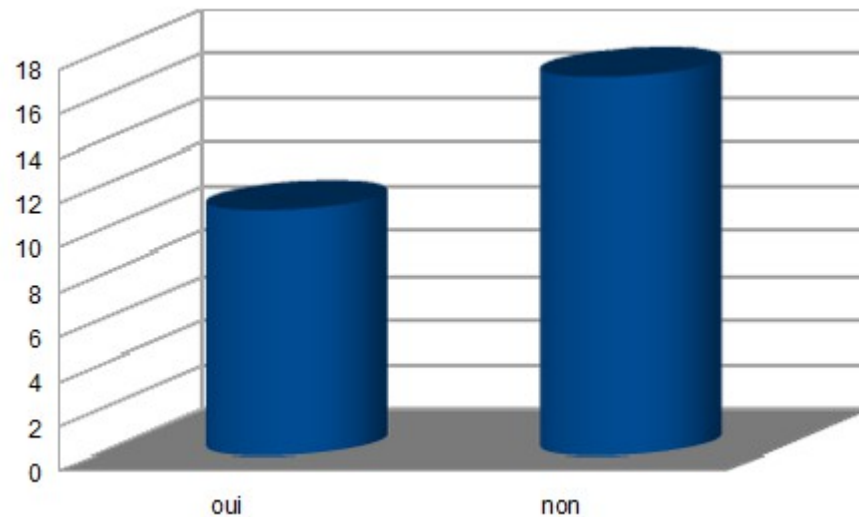
- de 20 ans



+ de 60 ans

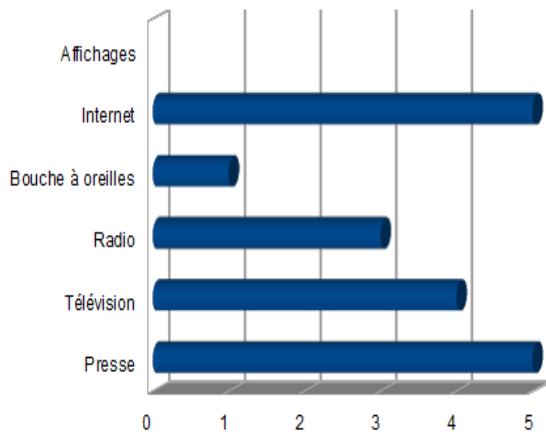


de 20 à 60 ans

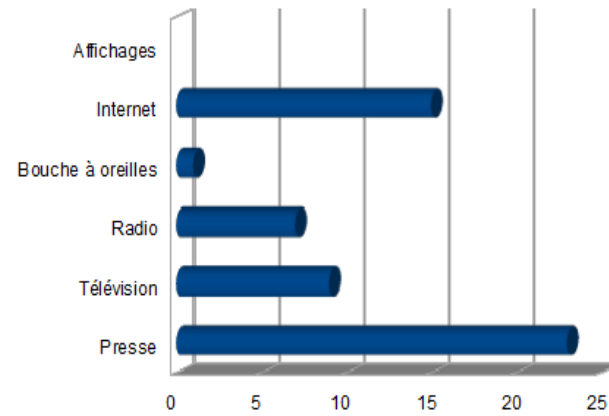


Vecteurs d'informations

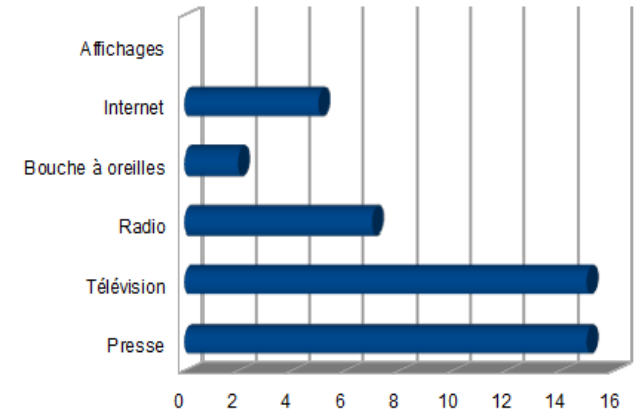
- de 20 ans



de 20 à 60 ans



+ de 60 ans



Association Citoyens du pays du Mont Saint Michel